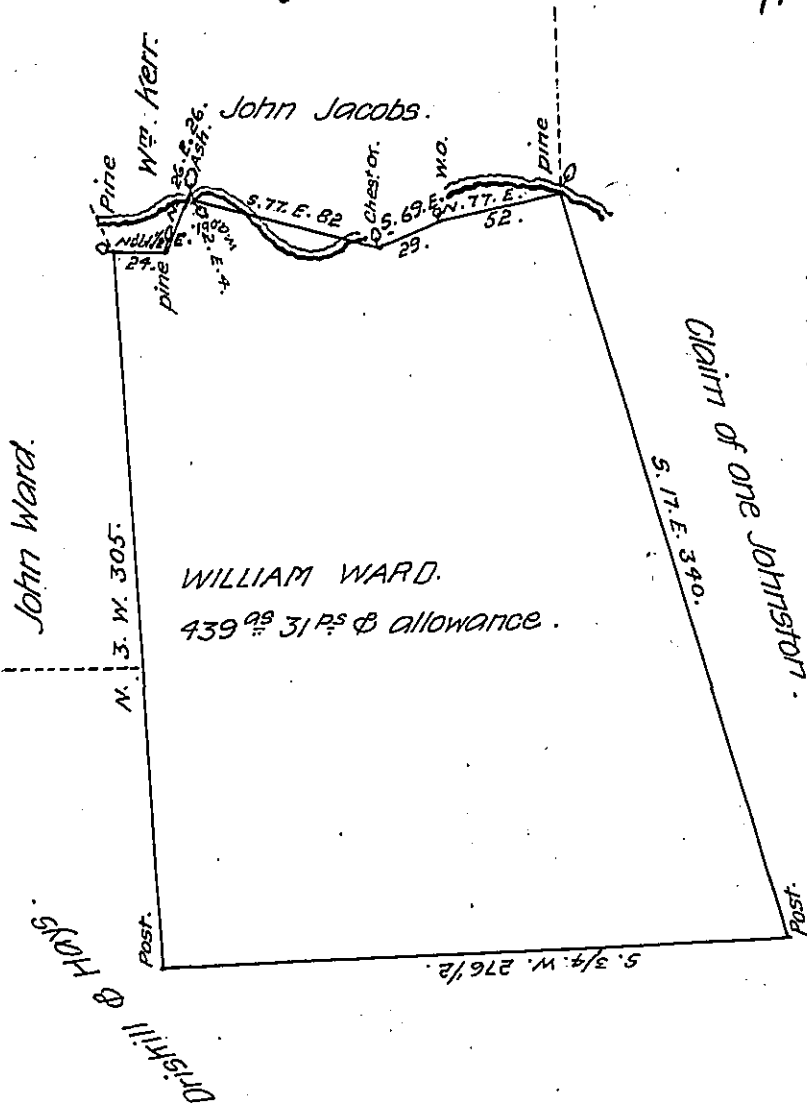


C-139-217

C-66-79

A-485

G-444



- N. 88 1/2 E. 24 Pine
- N. 26 E. 26 Ash.
- S. 2 E. 4 WO.
- S. 77 E. 82 C. or.
- S. 69 E. 29 WO.
- N. 77 E. 52 Pine.

X-37

Draught of a Tract of Land situate in Rye Township Cumberland County Containing four hundred and thirty nine Acres and thirty one perches and allowance of 6^{ac} pr Ct for Roads &c Surveyed the 15th day April 1794 in pursuance of a Warrant granted to William Ward bearing date the 24th of Feb^y 1794.

P^r Sam^l Lyon D.S.

*To Daniel Brodhead Esq^r
Surveyor General.*

IN TESTIMONY that the above is a copy of the original remaining on file in the Department of Internal Affairs of Pennsylvania, made conformably to an Act of Assembly approved the 16th day of February, 1833, I have hereunto set my Hand and caused the Seal of said Department to be affixed at Harrisburg, this eighth day of August 1907.

Henry Howard
Secretary of Internal Affairs.